

D U A L
Accento

755nm Long Pulsed Alexandrite Laser
1064nm Long Pulsed Nd:YAG Laser



S I N G L E
Accento

755nm Long Pulsed Alexandrite Laser

Dual Accento & Single Accento

D U A L Accento

755nm & 1064nm Dual Wavelength Laser

755nm Long Pulsed **Alexandrite** Laser 1064nm Long Pulsed **Nd:YAG** Laser

Dual Accento is the unique device combining 755nm Long pulsed Alexandrite and 1064nm Long pulsed Nd:YAG. Alexandrite 755nm long pulsed wavelength due to the high melanin absorption it is effective for hair removal and pigmented lesions treatment. Nd:YAG 1064nm long pulsed wavelength rejuvenate skin by stimulating the dermis layer, effectively treating vascular lesions.



S I N G L E Accento

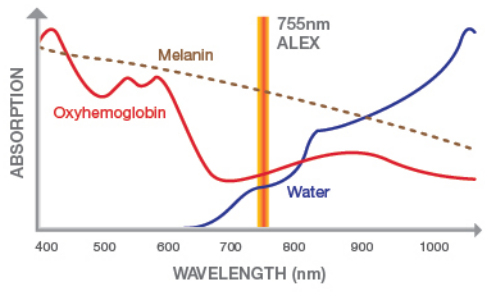
755nm Long Pulsed Alexandrite Laser

755nm Long Pulsed **Alexandrite** Laser

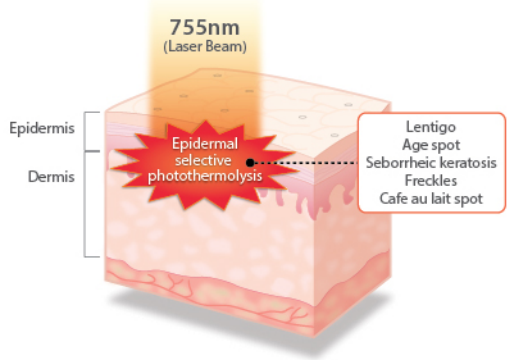
Single Accento is a Long pulsed Alexandrite laser with 755nm wavelength. It is excellently treating hair removal and pigmentation. It has excellent effect in hair removal as the wavelength penetrates deep into the skin and reaches hair follicle. In addition, due to the high melanin absorption it is effectively treats pigmentation without skin tissue damage.



755nm Long Pulsed Alexandrite S I N G L E D U A L Accento Accento

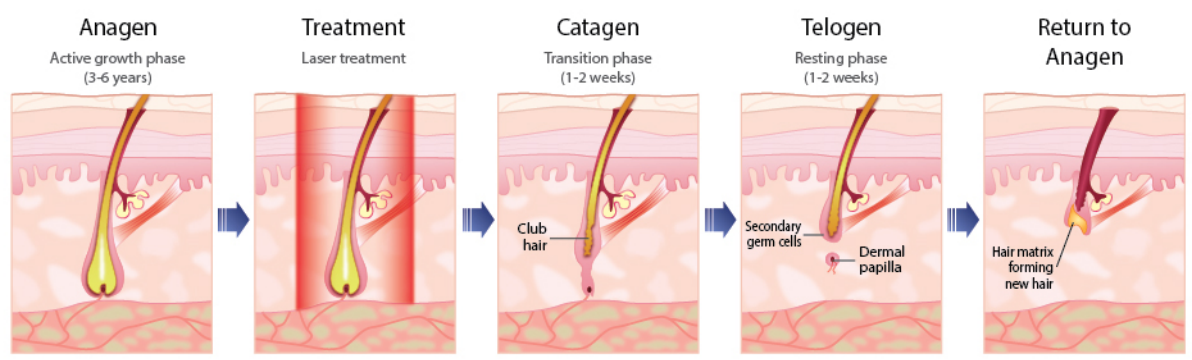


755nm wavelength has high level of melanin absorption, and low absorption level of water and oxyhemoglobin, so 755nm wavelength can be effective on the target without specific damage on neighboring tissues.



755nm wavelength allows deeper penetration into the dermis with less absorption by epidermal melanin. This causes less adverse side effects such as pigmentation in dark skin patients.

Alexandrite laser hair removal is with a wavelength of 755nm highly effective. It selectively damages the black melanin in hair roots that are located deep in skin where hair originates from, in order to suppress the recreation of hair.



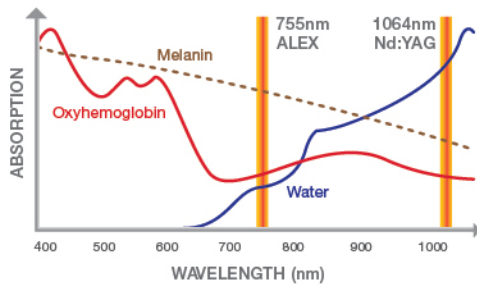
Hair removal *Pigmented lesions* *Alex toning* *Etc.*

Freckles **Lentigo** Mole Nevus Seborrheic keratosis Etc.

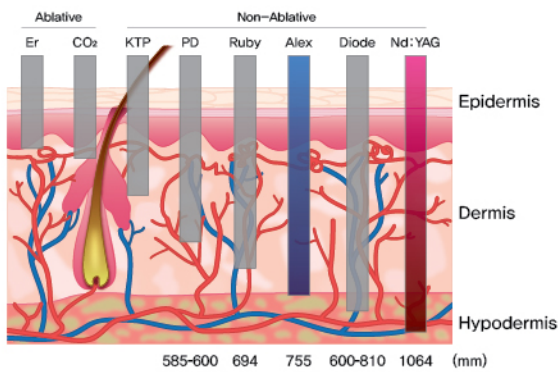
BISON' Long Pulsed Dual Alexandrite laser is able to provide 2 modes(755nm and 1064nm) in a single platform.

1064nm Long Pulsed Nd:YAG

DUAL
Accentor



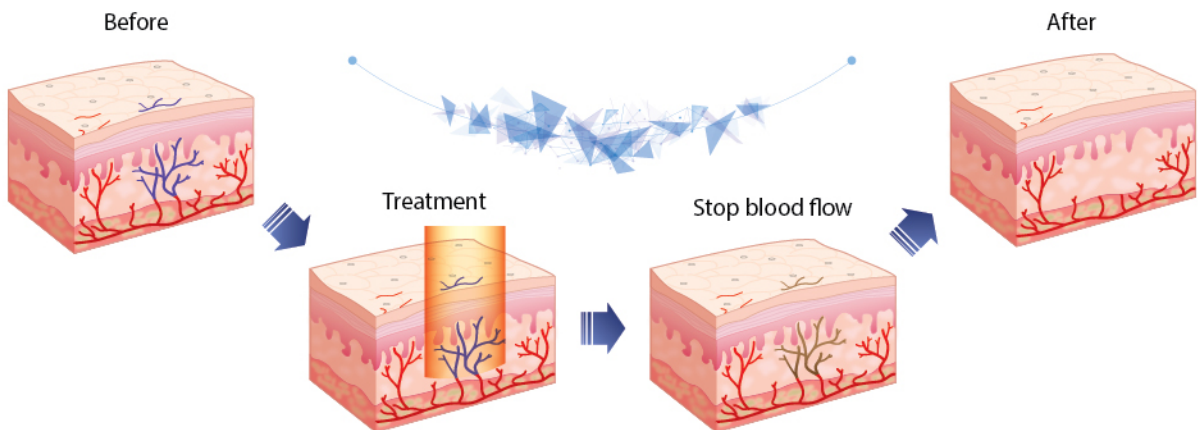
Long pulse Nd:YAG has low absorption in melanin and deeper skin penetration due to its high energy. It stimulates dermis layer without damage of epidermis, rearranges collagen and thus improves loose skin and fine wrinkles.



The advantage of Long pulsed Nd:YAG comparing to diode laser is its deeper penetration and fewer side effects caused by low absorption in melanin.

Principles of Vascular Laser Treatment

It is effective for treating varicose veins since 1064nm wavelength has a good absorption in blue.



- | | | | | | |
|----------------------------|-----------------------------|------------------------|-------------|--------------------|-------------|
| Skin rejuvenation | Vascular lesions | Hair removal | Wart | Nail fungus | Etc. |
| Face lifting Tightening | Acne redness Dark circle | Telangiectasia Vein | Etc. | | |

Various Switch



For user convenience there are three options; finger, wired foot or wireless foot switches. Finger switch is more precise and safe. Wireless foot switch very convenient and portable, operated with encoded signals using Worldwide 2.4 GHz ISM band frequency.

Specification of Wireless Foot Switch

Battery	AA 2 batteries
Waiting time	40,000 hours
Using time	8,000 hours

Cooling System

Cooling Setting

Hair removal procedure demands for high energy continuous treatment which cause skin burns or PIH as the side effect. To prevent this side effects a user can selectively choose one of the cooling methods and setup mode for cooling spray.



Smart Cooling

There are two cooling methods: Cryogen gas or a Cryojet device. The user can choose one of each.

- Cryogen gas is basically a built in "Accento" (one bottle).
- Cryojet device with holder is an optional product.

Standard System



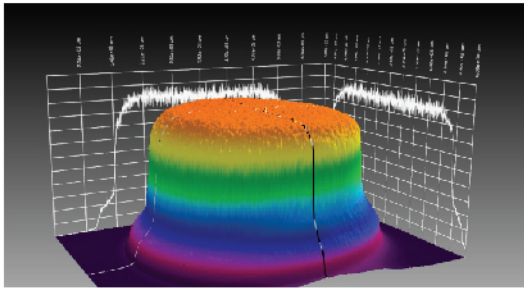
Cryogen Gas Handpiece
(HFC-134a / 655ml / Consumable)

Optional System



Cryojet (Optional)
Holder (Optional) with Handpiece

Flat-Top Beam



Flat top Beam is an unique high-technology which makes the laser not only irradiates energy equally but also reduces side effects such as PIH.

Various spot size



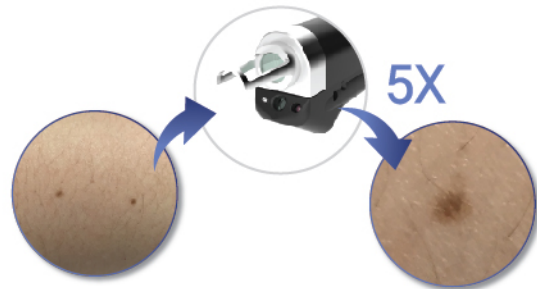
Changing spot size is available by replacing the tips. The mail system recognizes spot sizes automatically to provide user convenience and safety.

User Friendly UI



User can switch from Alexandrite to Nd:YAG by only one touch. 10.4 inch improved monitor offers good visibility and easy control.

Camera



Attaching the camera with Hi-flux LED light on the handpiece, user can check the lesions less visible to the naked eye in real-time through a sub-monitor. And user can see more accurately the treatment area five times magnified image.

High Capacity Storage Space

The parameter can be saved to the memory up to 420 slots.

User can save the procedure parameters and information of a patient up to eight characters.



Specification

General

Dimension (W x D x H)	450(W) x 908(D) x 1240(H) (mm)
Weight	120 Kg
Weight including accessories	127 Kg
Main voltage	220/230V, 50/60Hz
Maximum power consumption	2990 VA
Main current	12 A
Safety class	Class IV laser

Laser system

	SINGLE	DUAL	
Laser type	Long Pulsed Alexandrite	Long Pulsed Alexandrite	Long Pulsed Nd:YAG
Wavelength	755nm	755nm	1064nm
Maximum energy	Max 60J for Alex	Max 60J for Alex	Max 100J for Nd:YAG
Maximum pulse fluence	Max 600J/cm ²		
Pulse width	0.2ms ~ 350ms		
Pulse control	Hand switch or Wired Foot switch or Wireless Foot switch		
Frequency	0.4 ~ 10Hz		
Beam delivery system	Via optical fiber Ø 1000µm x 3m		
Aiming beam	532nm, 5mW		
Skin cooling type	Cooling spray or Air cryo system		
Laser cooling	Water-to-air heat exchanger		
Calibration	Auto-calibration through external port		
Spot size	Ø 2, 4, 6, 8, 10, 12, 16, 20 (mm)		

Accento can use higher and more accurate energy comparing to other companies.



(Max 60J for Alex / Max 100J for Nd:YAG)





BISON
MEDICAL EQUIPMENT MANUFACTURER

(Gasan-dong, Ace High-end Tower 6),
Office, R&D : 1802 / Factory : 1801
234, Beotkkot-ro, Geumcheon-gu, Seoul, Korea
(zip code 08513)

-  +82-2-865-7121
-  +82-2-865-7131
-  sales@bisonmedical.com / bison@bisonmedical.com
-  www.bisonmedical.com
-  www.facebook.com/bisonmedical

This product has been upgrade which supported by Laser application center of Institute of advanced convergence technology as a program of infra connecting project for laser application medical device.

Copyright© BISON CO., LTD. All rights reserved.